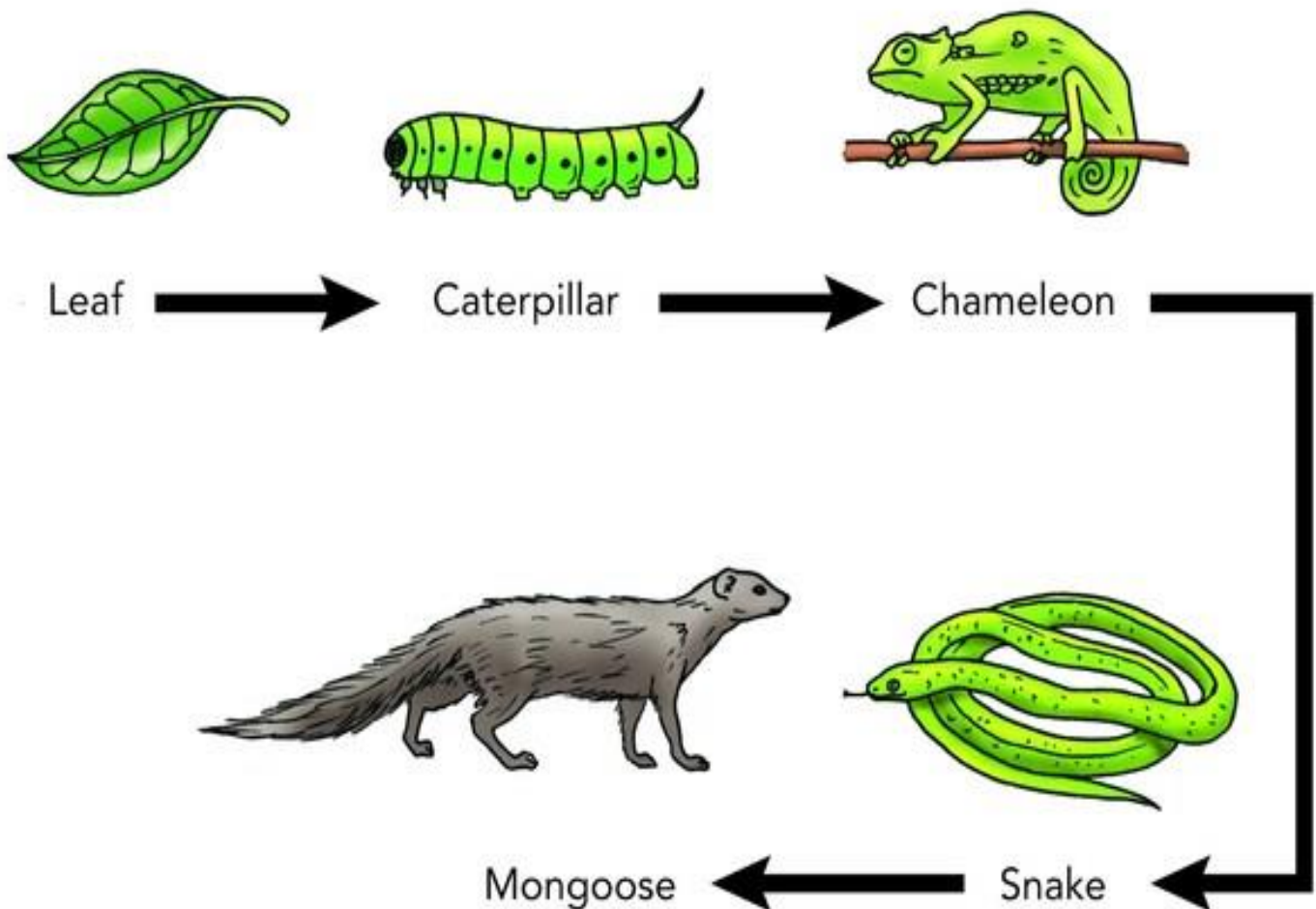
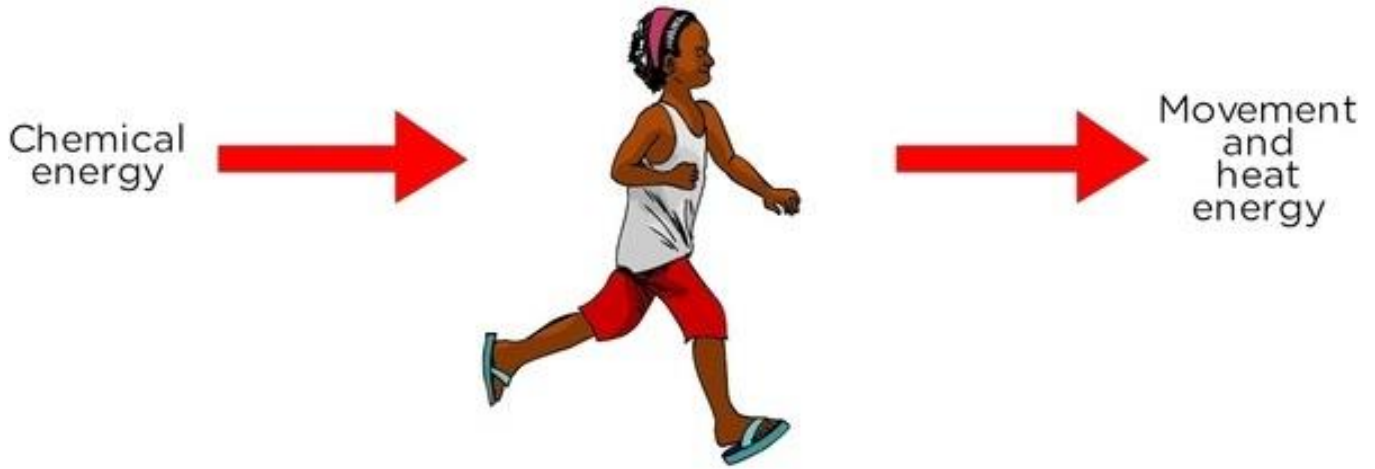


An energy chain:

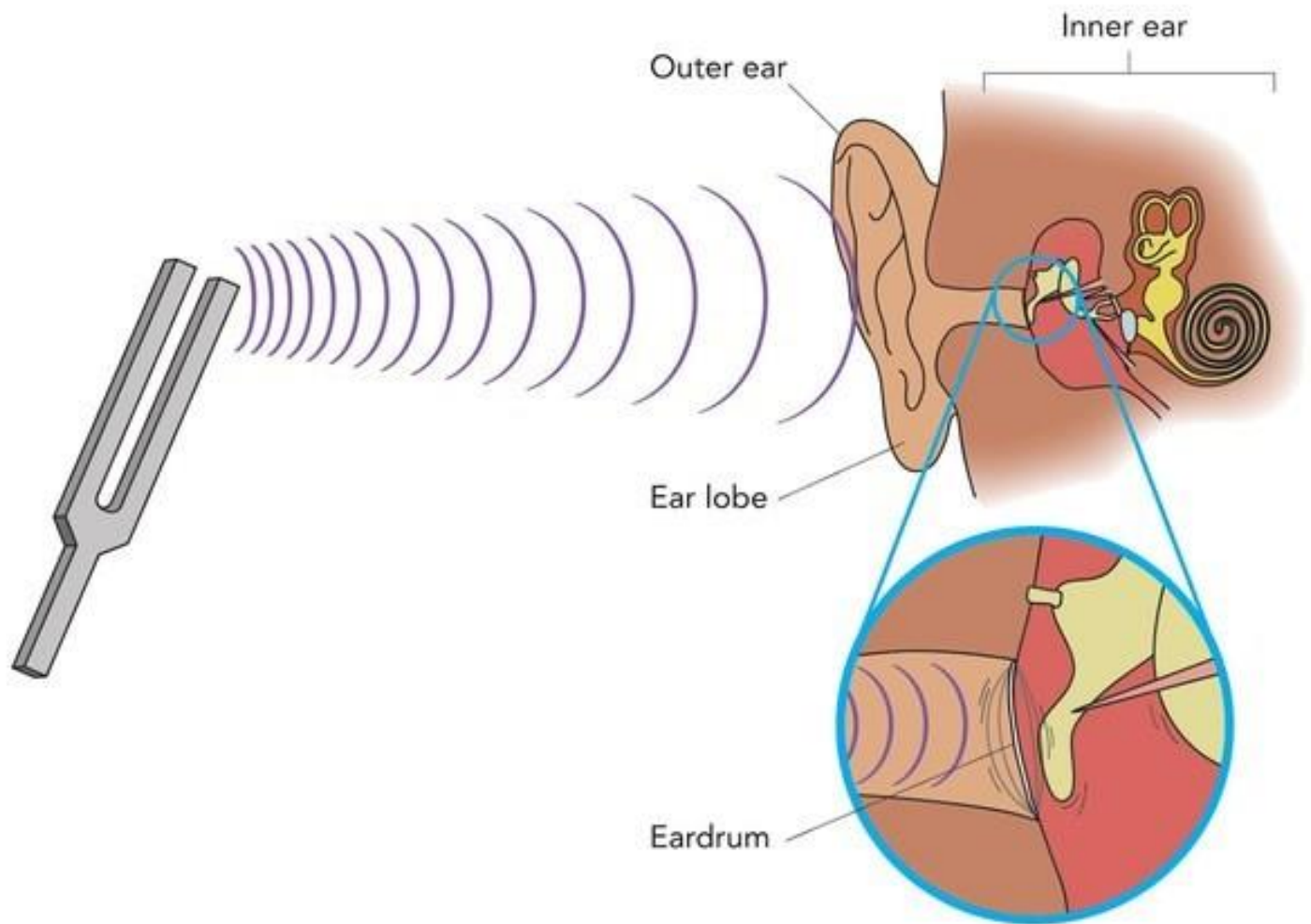
The transfer of energy from the Sun to the plants and animals is called an **energy chain**.



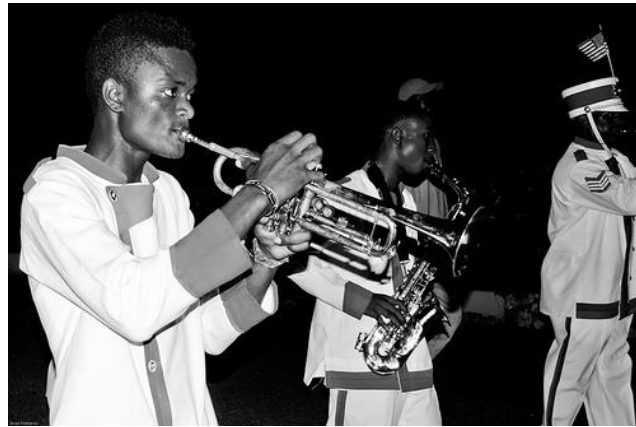
INPUT & OUTPUT ENERGY



How do we hear?



Input and output energy of musical instruments:



Input of energy:
Air is blown into the instrument.

System: Trumpet

Output of energy: the trumpet vibrates and the vibrating air produces sounds that we hear.



Input of energy:
Fingers move to pluck the strings.

System: guitar

Output of energy: Guitar produces sound that we can hear.